

INSTRUCTIONS FOR ONLINE NIHSS CERTIFICATION

1. Go to NIH Stroke Scale website. (Figure 1)

<http://nihss-english.trainingcampus.net/uas/modules/trees/windex.aspx>

For **PREVIOUSLY** registered:

- Log in using your username and password.
- If you forgot your password, you can request it by clicking on **Click here** link. It will prompt you for the email address you used in your initial registration.
- Log in to your email to retrieve your password and use this to login to the website.

For **NEW** users:

- Click on Register.
- Enter your email address and Submit. This will take you to the registration page. (Figure 2)
- Complete your profile on the registration page and click on Submit. (Figure 3). **Note:** Write down your username and password. You will need this to log in to the website.

2. Once logged in, click on My Activities. (Figure 4)

3. Choose the appropriate certification test group and click on **Enroll Now**. This will start the certification test.

Available Test Groups

- Certification TEST GROUP A – expires 1 year
- Certification TEST GROUP B – expires 2 years
- Certification TEST GROUP C – expires 2 years
- Certification TEST GROUP D – expires 2 years
- Certification TEST GROUP E – expires 2 years
- Certification TEST GROUP F – expires 2 years

4. Go through the entire course. **Note:** You can choose to complete the course in multiple sittings. Use your username and password to log back in to the website.

5. Once completed, print 3 copies of the certificate. Maintain a copy for yourself and give the other copies to the:

- Head nurse
- Stroke coordinator



Figure 1



Figure 2

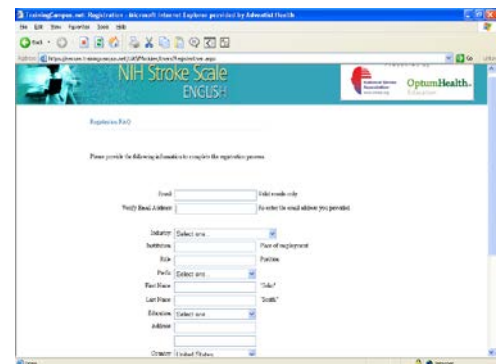


Figure 3

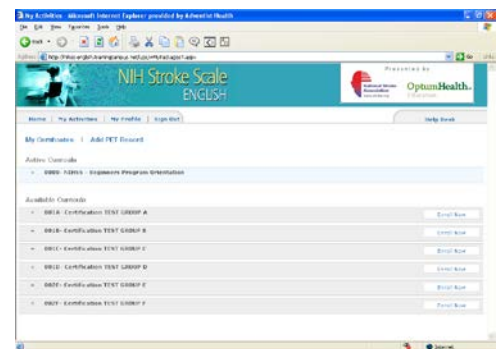


Figure 4